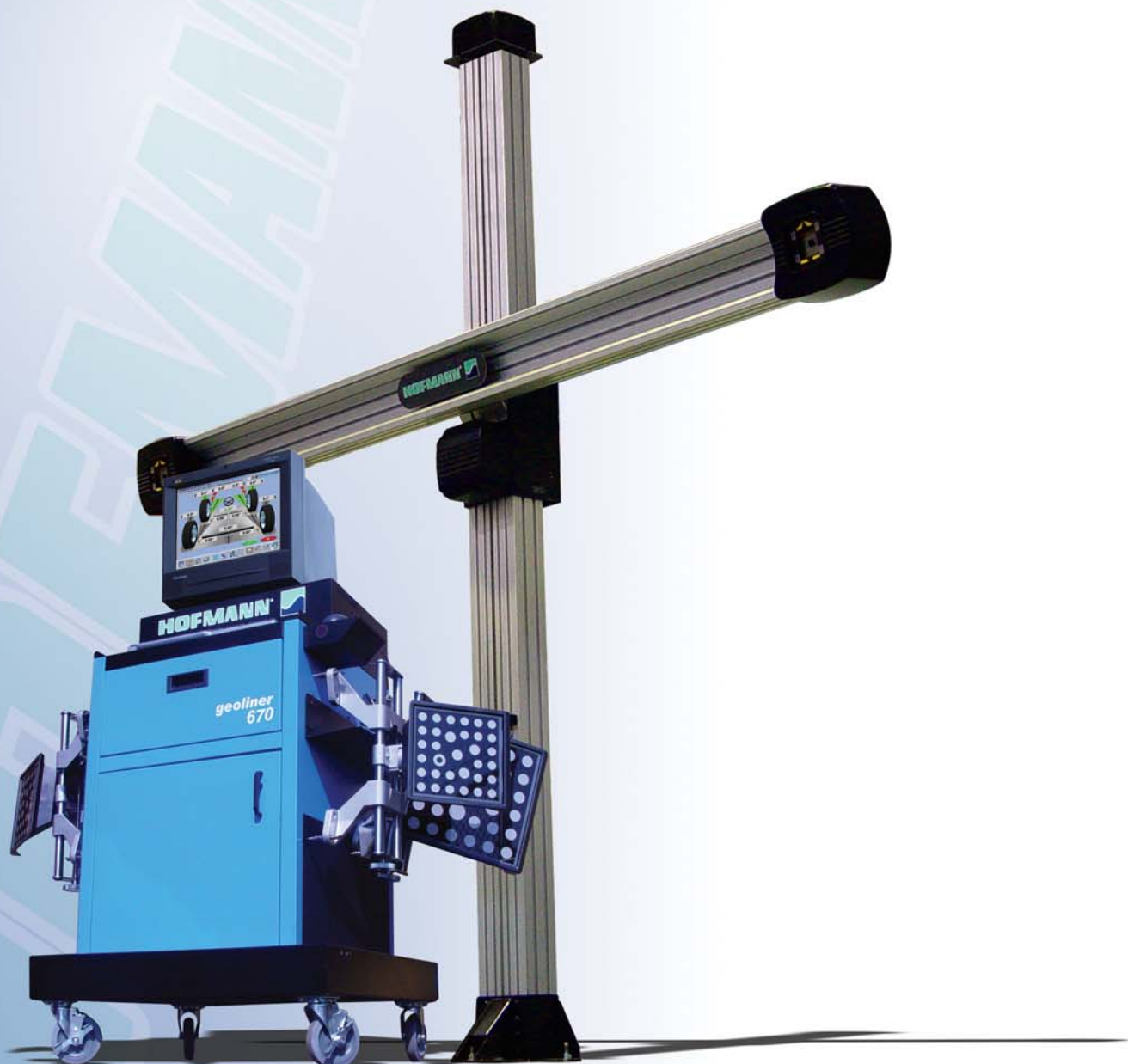


HOFMANN®



Geoliner 670

IMAGE WHEEL ALIGNER

HOFMANN IMAGING TECHNOLOGY

Set-Up To Readings In Under 2 Minutes

Imaging Technology allows you to do more alignments in less time. The patented non-electronic shatter-proof wheel targets eliminate service calls for calibrations and wheel sensor maintenance.



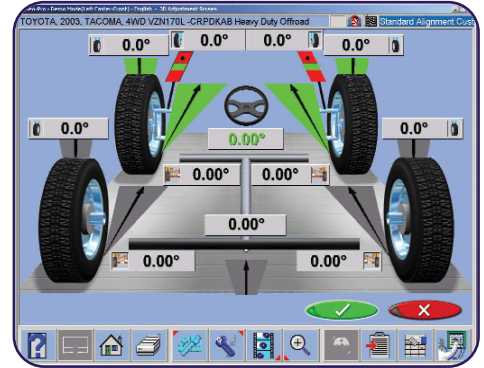
1

Mount wheel targets



2

Roll vehicle back or pull forward only 8"

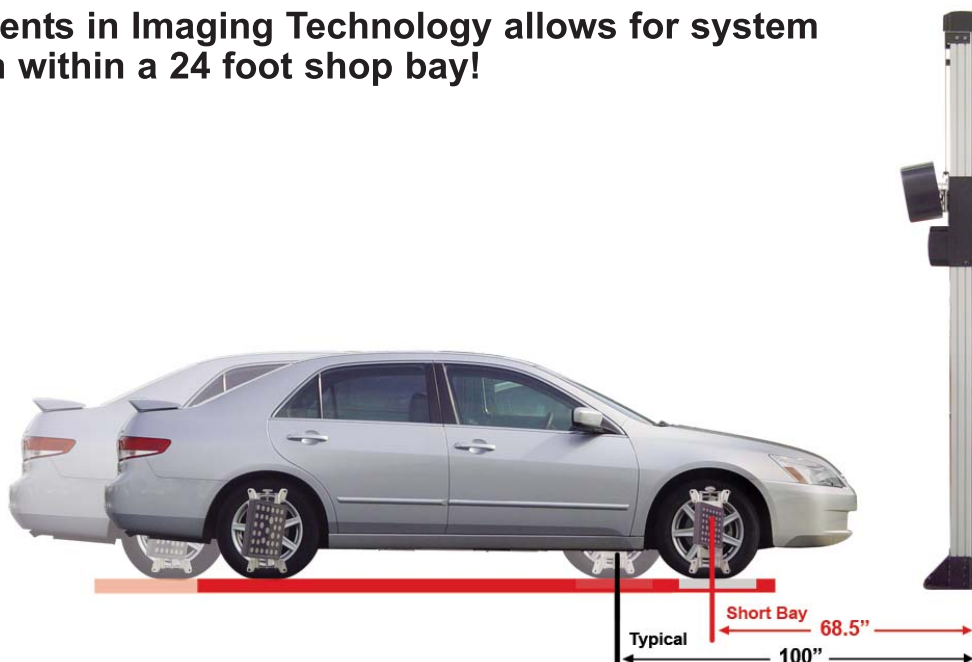


3

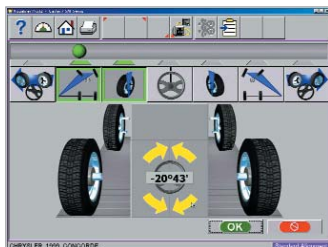
Obtain all alignment readings in under 2 minutes. Adjust vehicle using live measurements.

ALIGNMENT BAY REQUIREMENTS

Advancements in Imaging Technology allows for system installation within a 24 foot shop bay!



EASY TO USE ALIGNMENT SOFTWARE



Intuitive Measurement
Measurement of caster, toe-out on turns and maximum steering angle can be done by simply turning the steering wheel ONCE to the left and right. The system recognizes your steering input and anticipates the next measurement.

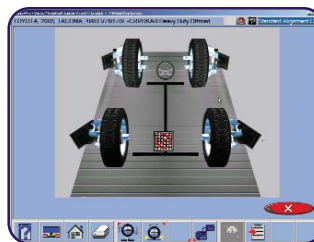
Animated Adjustment Aid

Technicians benefit from on-screen visual aids for vehicle-specific adjustments, including instructions, comments and necessary tools.

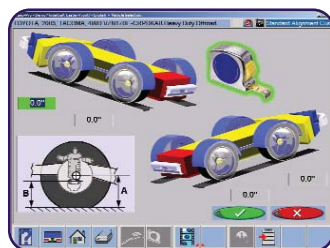


2-Wheel Alignment Capability

Great for performing 2-wheel alignment checks on fixed rear axle vehicles. Camber and Toe measurements in under one minute!



Simple implementation of the Ride Height TIP.



Live camera view aids technician in target placement.

Ride Height Technology*

As the system provides step-by-step instructions, simply hold the TIP (Target Imaging Pointer) against the vehicle touch points and this exclusive new digital imaging tool measures OEM specifications to ± 0.05 inch. The screen provides a live camera view to aid in target placement and an audible signal to indicate when each measurement is complete.

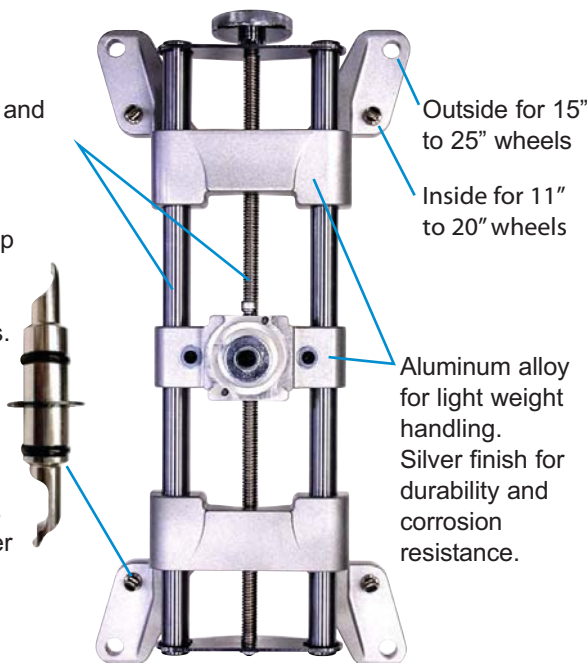
* Patented and/or Patent Pending Features

25" UNIVERSAL WHEEL CLAMPS

Heavy duty chrome rods and nickel-plated screw

Thin profile tip fits most wheel/tire combinations.

Extended tip with thin profile allows clamping over plastic wheel covers.



Outside for 15" to 25" wheels

Inside for 11" to 20" wheels

Aluminum alloy for light weight handling. Silver finish for durability and corrosion resistance.

Tire Clamp Adapter

(EAK0268J63A) allows accurate clamping without risk of scratching the wheel finish. Tire clamps provide secure attachment to wheel while plastic sleeves placed over standard claws ensure proper placement and wheel protection.



Optional Clamp Extensions

(EAK0268J62A) increase maximum clamping diameter to 30 inches.



Geoliner 670

HOFMANN®



**Windows® based Image Technology with both speed
and accuracy for the automotive professional**

FEATURES

Alignment Display

- Front Readings
- Rear Readings
- All Readings
- Zoom Readings
- Individual Camber
- Individual Toe
- Individual Caster
- SAI & Thrust Angle
- Included Angle
- Front & Rear Setback
- Toe Out On Turns
- Front Caster (-28° to +28°)
- Front & Rear Camber (-15° to +15°)
- Front & Rear Toe

Meter And All Reading Screens

- Advanced Alignment Measurements with reading/specifications and cross values
- Meter Screens

(Meter And All Reading Screens continued)

- Live 3-D Modeling *

Four-way System Controls

- Voice Align™ (optional)*
- Remote Control
- Console keyboard
- Optical Mouse

Other Software Features

- 3-D Animation
- Live Video Helps (Multimedia)
- Multiple A-Arm Adjust
- Adjust Camber Only
- Elevated Adjustments
- Active Cradle Adjustments
- Drag Link Adjust
- 4-Wheel Steer Adjust
- Rear Shim Programs

(Other Software Features continued)

- Driver Compliant Diagnostics
- A/I Alignment Diagnostics
- Adjustment Help Files
- E-Z Track Data Base
- Align Specs -30 years
- E-Z Toe
- Suspension Plus
- Ride Height Charting
- Wheel Dimensioning Plus
- User Login

Additional Setups

- Programmable Alignment Wizards
- Set-back in Align Path
- Thrust Align Only
- 28 Languages
- Custom Inspections
- Multiple Print Formats
- Inspections and Reports

SPECIFICATIONS

Available Configurations

- EEWA715A - Standard Configuration - 17" Color CRT
- EEWA715AL - Standard Configuration - 17" Color LCD

Computer Alignment Systems

- 17" color display monitor
- Mobile cabinet
- State-of-the-art Dell® PC
- 40GB Hard Drive (minimum)
- High Speed USB 2.0
- Keyboard & Optical Mouse
- Windows XP
- Network Interface
- iShop™, ShopKey™, ASANet™ compatible
- Color Ink Jet Printer

Standard Accessories

- Universal Wheel Clamp 11" - 25"
- Steering wheel holder
- Brake pedal depressor

Optional Equipment

- Premium Turntables EAK0277J23A
- 4-Post Rollback Kit EAK0277J39A
- 9K / 12K Scissor Rollback Kit EAK0277J40A
- 9K / 12K Scissor Roll Forward/Rollback Kit EAK0277J47A
- 14K Scissor Rollback Kit EAK0277J67A
- Hunter/Rotary Rollback Kit EAK0277J45A

Optional Accessories

- 29" Universal Wheel Clamp Ext. Kit EAK0268J62A
- Ride Height Target Kit EAK0256J71A
- Hub Adapter Kit (wheels-off alignment) EAK0222J83A
- Tire Clamp Adapter EAK0268J63A
- Remote Display Readout w/ 30" cable EAK0268J08A
- Convex Mirror 36" wide w/ hardware P-1826

Equipment Specifications

- Wheel size: 11" - 25"
- Tire diameter: unlimited
- Tread width: 48" - 96"
- Wheel base: 79" - 200"

Power Requirements

- 115V / 1Ph, 50/60 Hz / 6 amp
- 230V / 1Ph, 50/60 Hz / 3 amp

* Patented and/or Patent Pending Features

HOFMANN®

USA



309 Exchange Avenue • Conway, AR 72032
(800) 251-4500 • (501) 450-2662
Fax (501) 450-2085 • www.hofmann-usa.com

HOFMANN®

Canada



6500 Millcreek Drive • Mississauga, ONT L5N 4G4
(800) 267-2185
Fax (905) 821-2073 • www.hofmann.ca
E-mail: info@hofmann.ca