

HOFMANN®

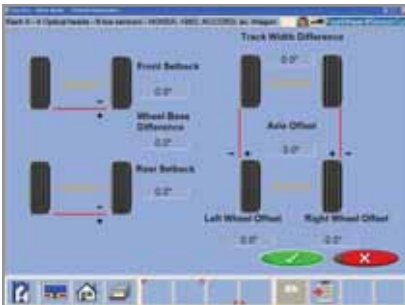


Geoliner 480/482

WHEEL ALIGNER

Geoliner 480/482

Software features at a single glance

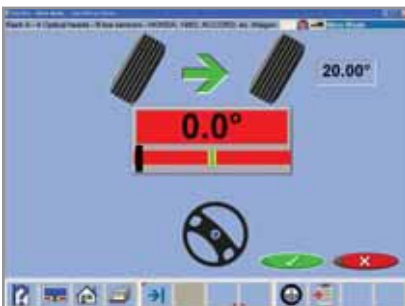


Wheelbase / track width

Easy-to-understand allocation of wheel positions relative to each other for wheel and cradle alignment.

OEM ride height measurement

Vehicle-specific OEM specs show the ride height required for alignment.



Toe-out on turns measurement

With the 25° toe measuring range the toe-out on turns is detected directly during a 20° steer with the CCD sensors of the wheel units.

Live cradle adjustment

A necessity for accurate alignment on front wheel drive vehicles.



EZTrack customer database

Easy search functions (MS Access format) for vehicles and/or alignments, e.g. via customer's name, vehicle registration, or vehicle ID.

OEM info page

Provides important alignment information to assist identification of OEM models upon a simple click of the "i" key on the keyboard.



Glossary of measurements

Includes all front and rear end data (actual data and vehicle specs) required for professional alignment analysis.

Live all-readings screen

All measurements are shown in live graphic meters which change as adjustments are made. Each meter can be zoomed.



Animated adjustment aid

Vehicle-specific adjustment points, shown as animated graphics, include comments on adjustment, spare parts and the use of special tools.

Preferences Menu

Customized adjustment of measurement routine and readings



CCD Wheel Sensors



- Tough, nuclear age polymer casings – significantly increased protection.
- Full-range/no-maintenance touch-pad controls on each wheel sensor. Full system control during the aligning process.
- Improved wheel clamp bearings to allow more secure attachment to wheel clamps even after years of use.
- No mechanical adjustments of any kind – less to go wrong or to worry about.
- Eight Standard measuring sensors for continuous calibration checks, frame damage checks and live off-set readings.

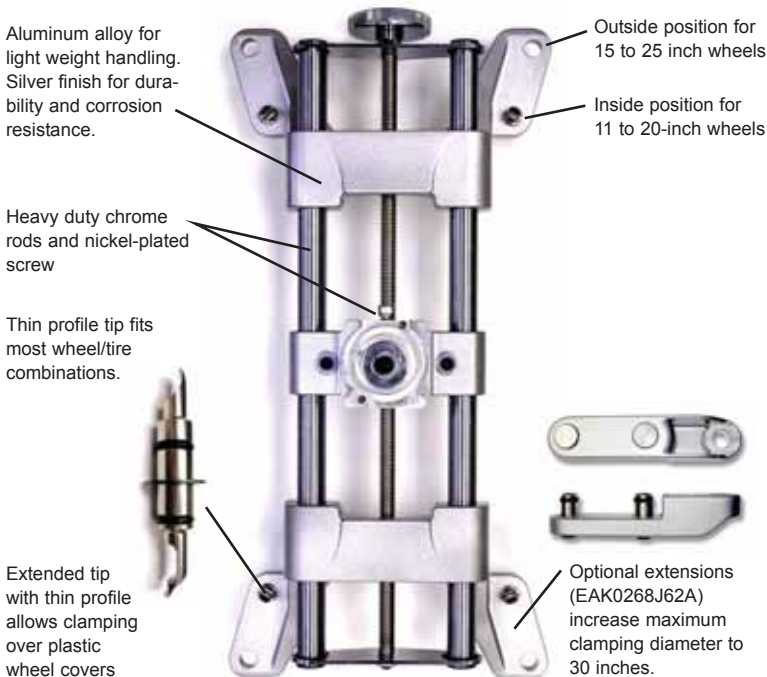
482 Cordless



Improved Range and Accuracy



Universal Wheel Clamps



Optional Clamp Accessories

Tire clamp adapter (EAK0268J63A) allows accurate clamping without risk of scratching the wheel finish. Tire clamps provide secure attachment to wheel while plastic sleeves placed over standard claws ensure proper placement



Drop-down adapter (EAK0268J73A) allows sensors to mount lower on the clamp assembly, easily clearing obstructions posed by low suspension vehicles.





**Four-Wheel Aligners with 8-Sensor
CCD Measuring Technology**

Features

Alignment Display

- Front Readings
- Rear Readings
- All Readings
- Zoom Readings
- Individual Camber
- Individual Toe
- Individual Caster
- SAI & Thrust Angle
- Included Angle
- Front & Rear Setback
- Toe Out On Turns
- Front Caster (-28° to +28°)
- Front & Rear Camber (-15° to +15°)
- Front & Rear Toe

Meter And All Reading Screens

- Advanced Alignment Measurements with reading/specifications and cross values
- Meter Screens

Four-way System Controls

- Voice Align™ (optional)*
- Remote control
- Console keyboard
- Optical Mouse

Other Software Features

- 3-D Animation
- Live Video Helps (Multimedia)
- Multiple A-Arm Adjust
- Adjust Camber Only
- Elevated Adjustments
- Active Cradle Adjustments
- Drag Link Adjust
- 4-Wheel Steer Adjust
- Rear Shim Programs
- Multiple Rack Support (3 total)
- Driver Complaint Diagnostics
- A/I Alignment Diagnostics
- Adjustment Help Files

(Other Software Features continued)

- E-Z Track Data Base
- Align Specs -30 years
- E-Z Toe
- Suspension Plus
- Ride Height Charting
- Wheel Dimensioning Plus
- User Login

Additional Setups

- Programmable Alignment Wizards
- OEM Wizards
- Set-back in Align Path
- Thrust Align Only
- Selectable Cross Values
- 28 Languages
- Custom Inspections
- Multiple Print Formats
- Inspections and Reports
- Shop Management Interface

Specifications

Computer Alignment Systems

- 17" Color Display Monitor
- Mobile Deluxe Cabinet
- State-of-the-art Dell® PC
- DVD drive / 3.5 Floppy
- Network Card
- Color Ink Jet Printer
- 8-Sensor CCD Heads
- 16 NiMH Batteries (482 only)
- Battery Charging Station (482 only)

Standard Accessories

- Wheel Clamps - 11" to 25"
- Steering Wheel Holder
- Brake pedal depressor
- Optical Mouse
- Remote controller

Optional Equipment

- Stainless Steel Turntables - 054
- Heavy Duty Truck Turntables, (Set: 2) - 1260
- Surface Mount Portable Rear Slip Plates, (Set: 2) - 64222
- Frame Angle Gauge - 8-05320A
- Electronic Turntables. - 82EUR
- Rollback Kit for Stainless Turntables - 055
- Roll Forward Kit for 4-post - 056
- Rollback Rubber Pads, (Set: 2) - 046
- Stainless Turntables (Hunter/Rotary) (Set: 2) - 89261
- Roll Back Kit (Rotary) - 89327
- Roll Back Kit (Hunter) - 89328

Optional Accessories

- Voice Align™* Kit - EAK0222J17A
- Lift Wiring Kit - EAK0222J51A
- 60' Cable for CCD Aligners - EAW0235J19A

(Accessories continued)

- Calibration Kit - EAK0222J02A
- BMW / MB Alloy Hub Pin Kit - EAK0222J28A
- BMW 7 Series / MB A-Class Hub Pin Kit - EAK0256J41A
- Porsche Alloy Adapter Kit - EAK0222J20A
- Remote Display Readout w/ 30" cable - EAK0222J77A
- Alloy Quick Clamp - EAK0268J63A
- Convex Mirror 36" wide w/ hardware - P-1826

Power Requirements

- 115V / 1Ph, 50/60 Hz / 6 amp
- 230V / 1Ph, 50/60 Hz / 3 amp

* Patented and/or Patent Pending Features



309 Exchange Avenue • Conway, AR 72032
(800) 251-4500 • (501) 450-1581
Fax (501) 450-2085 • www.hofmann-usa.com



6500 Millcreek Drive • Mississauga, ONT L5N 4G4
(800) 267-2185 • (866) 812-5316
Fax (905) 821-2073 • www.hofmann.ca
E-mail: info@hofmann.ca